

355 DELTA AVENUE

BURNABY, BC

V5B 3C7

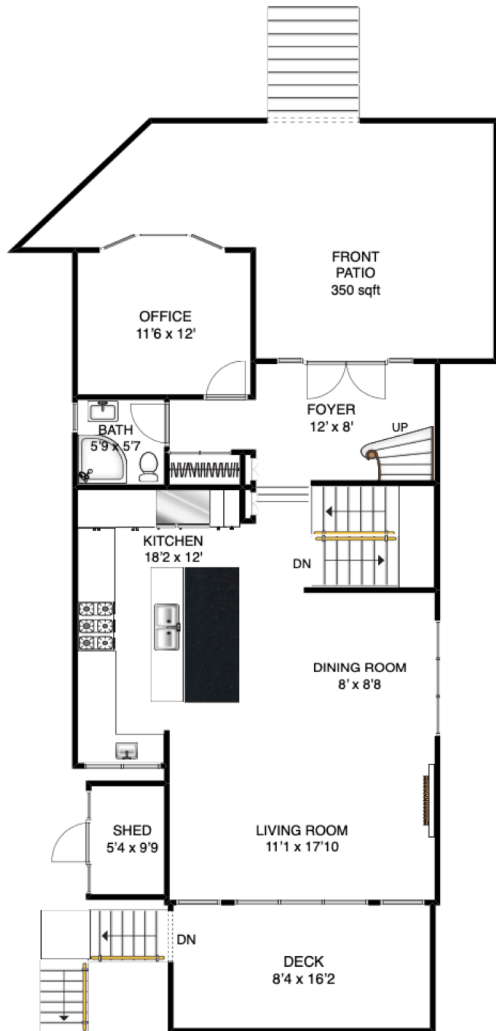
604.644.3293

Proven Results...Proven Success!

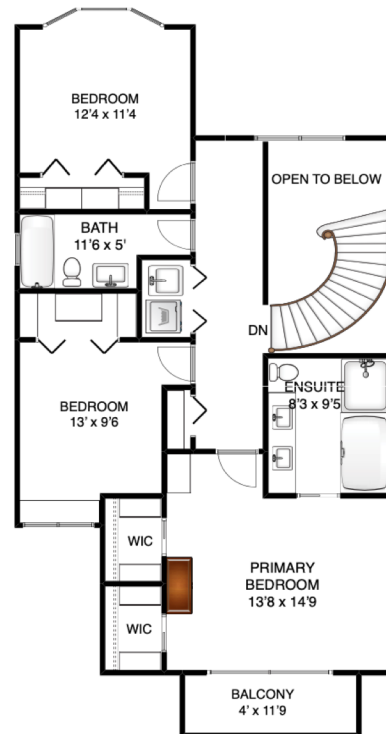


TOTALS	
Main Floor (finished):	1050 sqft
Upper Level (finished):	930 sqft
Lower Level (finished):	350 sqft
TOTAL FINISHED:	2330 sqft
Storage room (unfinished):	110 sqft
Crawlspace (unfinished):	420 sqft
TOTAL UNFINISHED:	530 sqft
GRAND TOTAL:	2860 sqft

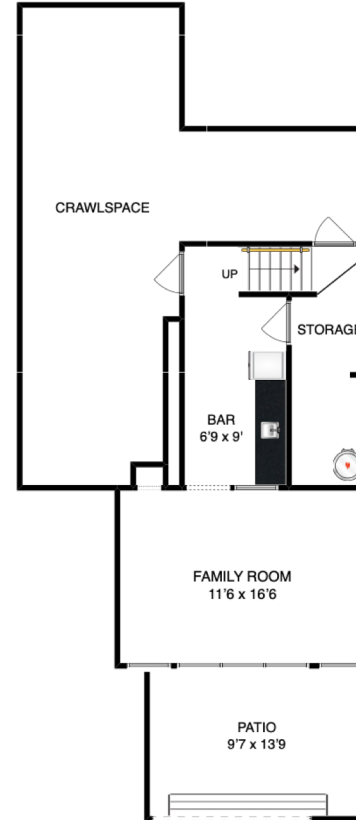
OTHER AREAS	
Patio (Main):	350 sqft
Patio (Lower):	130 sqft
Balcony (Upper):	47 sqft
Deck (Main):	130 sqft
Deck (Garage):	220 sqft
Garage:	441 sqft
Shed:	52 sqft



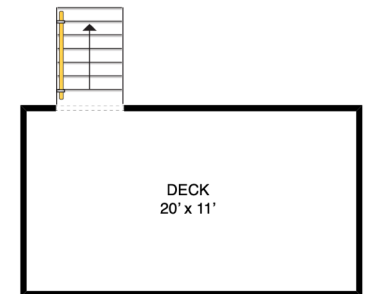
MAIN FLOOR



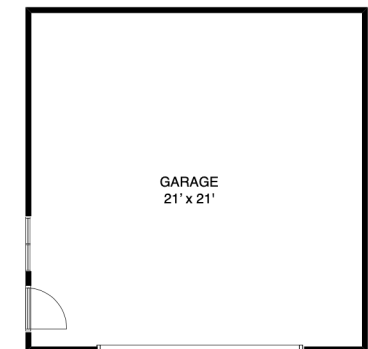
UPPER FLOOR



LOWER FLOOR



GARAGE DECK



GARAGE

www.kenandlinda.com

NOTES:

FLOOR PLAN MEASUREMENTS, DIMENSIONS, SQUARE FOOTAGE, EXISTING STRUCTURES & FEATURES ARE APPROXIMATIONS AND FOR ILLUSTRATIVE PURPOSES ONLY. WE MAKE NO GUARANTEE, EXPRESSED OR IMPLIED, AS TO THE ACCURACY AND COMPLETENESS OF THIS RENDERING.

